



# SOUTHAMPTON TOWNSHIP

FRANKLIN COUNTY

WWW.SOUTHAMPTONTOWNSHIP.ORG

Inside this issue:

Steve Wolfe	1-2
When it Snows	1-2
House Bill 2431	2-5
Bulky Trash Days	3
Contact Info	3
Leaf Collection	4
Septic Pumping	4
Denter Park	5
Library Donation	5
Shippensburg Activities	6

## Meet Steven Wolfe—Township Supervisor

Steven Wolfe said he was “honored” to be appointed to fill the vacancy in the Southampton Township Board of Supervisors, at the May 25<sup>th</sup> Supervisor’s meeting this year.

Steve lives with his wife, Jan, on Scenic Drive in Southampton Township and has since 1996. He is a Professional Land Surveyor and currently works at Dennis E. Black Engineering, Inc. in Chambersburg. He graduated with a surveying major from Penn State University, Mont Alto, in 1971. He became a Professional Land Surveyor in 1976 and has worked in that capacity since that time.

Due to the nature of his work, Steve attended many municipal meetings and has observed township meetings in a variety of municipalities over the years. These observations led to an interest in participating in local government.

Since his first township meeting in

June of this year, Steve says, he is learning to appreciate the hard work and demands of a township supervisor. “I also, now, better recognize the dedication of our current board of supervisors: Paul Witter and Sam Cressler. Our township employees serve with loyalty and sincerity. I think we are all fortunate to be



Continued on Page 2



Trick or Treat  
 October 28th  
 6:00pm to 8:00pm

As you may have witnessed last year, the township trucks are put in motion pretty quickly when the snow and ice begin to fall. Keeping the roads as safe as possible through cindering, salting or plowing is our number one priority. Frequently when it snows, our drivers are out prior to most people getting up, and/or after most have gone to bed. With that in mind, we ask that you please be patient with our drivers, especially as they clean intersections, which can be dangerous.

### Office Hours During Snowstorms

The normal township hours are 7:00am until 4:00pm Monday through Friday; however, during snowstorms all available personnel may be required

## WHEN IT SNOWS...

to keep the roads passable and safe. If you need to contact the township, please leave a message and someone will get back to you as soon as possible.

### Method to Our Plowing

There is a methodical approach to plowing, and that is to open main arteries first, then developments. So if you live in a development and are not plowed out, rest assured that when you do get out, the main township roads will be passable. We cannot answer for the State Roads.

### Snowplow Pushes Snow Back Into Your Driveway

We’ve all been frustrated by our driveways being plowed shut by the snowplow. Usually this

Continued on Page 2

## House Bill Endangers Way-of-Life as We Know It

When it snows, the roads are plowed. In the spring and summer, local crews are out sealing and paving the roads, in the fall you rake your leaves out to the side of the road and they are collected. And if you have a problem, you know that a township supervisor is just a phone call away, and you're not going to get an automated phone service.

Well, all of that could dramatically change if a piece of legislation, known as House Bill 2431, starts gaining traction. The proposal, sponsored by Rep. Thomas Caltagirone (D) Berks County, calls for a constitutional amendment to establish Pennsylvania's 67 counties as the basic level of government.

If House Bill 2431 passes, our township - the very place where you and your family call home - would be abolished along with cities and boroughs. The county would take over all municipal operations, including roads, land use and zoning, sanitation, permitting and inspections.

The sponsors of the bill contend that a bigger, centralized government model is more effective and efficient than the current system of local hometown governance. These so-called reformers refer to townships as "relics of the past" or "horse and buggy government".

The Pennsylvania Township Association President, David M Sanko, retorts, "In fact, the opposite is true. Just look around this state and you will see the evidence." He adds, "townships aren't failing, declaring bankruptcy, or imposing widespread tax increases. Instead, it's the bigger governments - places like Pittsburgh, Philadelphia, Harrisburg and Reading - that are in real financial trouble. Townships have been doing more with less ever since the days of William Penn and they work."

According to a Lincoln Institute survey of registered Pennsylvania Voters, 80 percent of the respondents said their local government should not be replaced with a county wide government.

To make matters worse for us, the Cum-

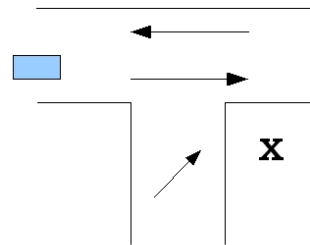
**"Townships aren't failing, declaring bankruptcy, or imposing widespread tax increases. Instead it's bigger governments."**

## Snow—Continued from Page 1

happens as soon as we finished shoveling and go inside and pour a cup of coffee. Unfortunately this is inevitable, but you can minimize the amount pushed back in by shoveling/blowing your snow to the right of your driveway. By doing this, the bulk of the snow is past your driveway when the snowplow goes through.

### Snowplow Hit My Mailbox

We get several calls after every snowstorm from residents whose mailbox has been knocked over. Occasionally our drivers will get a mailbox, but more often than not, it is the force of the snow hitting it that knocks the mailbox over. If you feel a driver hit your mailbox, call the office at 532-9041. Our Roadmaster will examine the mailbox, measuring plow marks and tire tracks. If he determines that it was in fact the plow physically hitting the mailbox and destroying it, we will replace it for you. We cannot replace mailboxes that are damaged by the force of the snow or are less than a full two (2) feet off of the roadway.



Shoveling your snow to the right when cleaning off your driveway, will help to keep the snowplows from pushing it back in as they plow the roads.

## Steve Wolfe—Continued from Page 1

residents of this township.

"My plans are to observe, learn, and determine how I can be a useful contributor to the Board of Supervisors." The requirements of an appointee to the Board of Supervisors is to serve until the next supervisor election which will be in November, 2011.

Since Steve is employed outside of the township, he would like to welcome any questions, comments or suggestions through his township email at: [steve\\_wolfe@comcast.net](mailto:steve_wolfe@comcast.net).

## Dentler Park Vandalism

In 2007, the Dentler Village Homeowners Association approached the township about taking over the small park in Dentler on Mt Rock Road. Your supervisors accepted the facility for one dollar. We upgraded the park with new bathrooms, playground equipment and other miscellaneous improvements. We have invested over \$35,000 in this facility.

One of the driving factors for your supervisors in their decision to take over the little park was all the children living in the area. We want to provide a safe and friendly place for the children to play.

We have had sporadic vandalism and damage to the park and its equipment. It is becoming a regular problem with graffiti, broken and damaged equipment, even kicking water pipes open. We talk to the children in the area and they won't name names but admit it is the local children breaking stuff up.

Please consider this a public notice to all folks utilizing the park. If we cannot keep the vandalism under control, we will be forced to close the park down and post it with "No Trespassing" signs. If caught vandalizing the park, the township will enforce full prosecution.

We realize that it is only a few bad apples but we can't and won't post a guard on this park. It is there for everyone's enjoyment and we hope the neighbors can find out the culprits and stop the vandals. **Don't be afraid to call the State Police if you see improper activity at the park.** It is your park and we cannot keep it open without your help.



Two new grills were installed at Dentler Park.  
To reserve the park, call 532-9041.

**Gettel's Salvage reported that Southampton Township recycled 14,000 pounds of metal during the last bulky trash days!**

## Township Bill—Continued from Page 2

berland and Franklin County Line goes right through the middle of town, so depending on which side of town you live on you would have to go to Carlisle or, in our case, Chambersburg.

Mr. Sanko comments, "I don't dispute that government is broken - in Harrisburg and Washington - and that's where we really should be focusing our attention. Bigger, centralized government doesn't work. It never has. It didn't in the Soviet Union, and it won't in Pennsylvania."

Your township supervisors will continue to live within our means. Unless mandated by Harrisburg to create a police department, at a cost of \$1 million dollars a year, as they are proposing; or if they keep lowering our percentage of your licensing fee for roads, we will continue to have NO local municipal property tax or crazy high millage rates.

We will continue to fight for your right and ability to afford to live here.

## Library Match Program

Do you or your children take advantage of the Shippensburg Public Library? Maybe you check out audio books to listen to during your commute to work. Maybe you take your children in for programs and summer reading. Maybe you read for education or self-enrichment, or just check out books to read for enjoyment. If you have ever considered contributing to the Public Library, then now is the time to act.



Until December 31st of this year, Southampton Township/Franklin County will match residents donations 2-to-1 up to \$2,000. So if you donate \$100, we will match with \$200 making a \$300 donation! We will match our resident's *total* contributions up to \$100,000.

For more information on how to take advantage of this offer, check out our website at [www.southaptontownship.org](http://www.southaptontownship.org), and click on Library Match Program. Feel free to stop by the township office or Shippensburg Public Library to pick up a donation form.

---

# SOUTHAMPTON TOWNSHIP

## FRANKLIN COUNTY

Southampton Township  
705 Municipal Drive  
Shippensburg, PA 17257

Phone: 717-532-9041

Email: shtwp@pa.net

### Your Supervisors

**Paul Witter**

**Samuel Cressler**

**Steven Wolfe**

---

## Look at the Cool Stuff Going on in Shippensburg

Southampton Place is located at 56 Cleversburg Road.

**CARD NIGHT**—5:30-8:30pm. Every Tuesday evening, canasta, pinochle, hearts or other games of choice. Ages 18+

**ACTIVE AGING WEEK**—Must be 50 years and older to participate.

**Capitol City Mall**—Monday, Sept. 20th at 8:00am

**Hiking Rail Trail w/picnic lunch**—Tuesday, Sept. 21st at 10am. Call 776-4478 by Sept. 13th to order a lunch.

**Covered Dish Supper**—Tuesday, Sept. 21st at 5:00pm. Carlisle Center at call 249-5007

**Putt Putt Golf at Sports Emporium**—Wednesday, Sept. 22nd at 10am. \$6 plus tax. Call 249-5007.

**Exhibition Shuffleboard, Wii bowling, Line Dancing, Tai Chi**—Thurs. Sept. 23rd, 10:00am –2:00pm

**Pick-Up Softball**—Sept. 24th 9:00am (co-ed) horseshoe tournament/lawn games.

**MEDICARE SPEAKER**- Sept. 28th at 10:00am

**FALL FOLIAGE TRAIN RIDE**—Sept. 30th at 6:30am. Stourbridge Lion Train ride followed by family style lunch and show, cost is \$89. Sign up no later than Sept. 10th.

**FLU SHOTS by VNA**—Tuesday, Oct. 5th

**SELF DEFENCE SEMINAR**—Oct. 12th at 1:00pm. Call 530-8217 to reserve a spot.

**OKTOBERFEST**—Oct. 22nd from 9:00am until 2:00pm. Doubling Gap. Cost is \$11 for non-members, \$6.00 for 2010 members. Payment and sign up are due by Oct 15th. Call 530-8217.

**OLYMPIC DAY** Saturday, Oct. 9th 8:30-5:00pm at Southampton Township Park. Youth thru Senior. Foot races, bicycle rally; horseshoe games; volleyball games 3 on 3 basketball games; foul shooting etc. Metals awarded. Activities for smaller children.

---