



# SOUTHAMPTON TOWNSHIP

FRANKLIN COUNTY

WWW.SOUTHAMPTONTOWNSHIP.ORG

## Inside This Issue

Nuisance Ordinance.....	1
White Church Bridge.....	1
Election Information.....	2
Fall Leaf Collection.....	2
Septic Pumping.....	2
Bulky Trash.....	3
Recycling Stats.....	3
Contact the Township...	4
Snow Information.....	4



Trick or Treat

October 30st

6:00pm to 8:00pm

## Nuisance Ordinance

The Southampton Township Board of Supervisors adopted a Nuisance Ordinance at a regular meeting on Tuesday, May 22, 2012. The 20 plus page Ordinance will bring uniformity in enforcing code violations by prohibiting nuisances on private or public property within the township.

The township had several nuisance ordinances that were piecemealed together to cover nuisance –related problems. This ordinance consolidates all of the existing ordinances and adds a few more common complaints that we hear from our residents.

A lot of municipalities like this ordinance because it puts everything in one place and makes enforcement much more efficient. The nuisance ordinance covers almost eve-

rything you can think of, such as structures that are unfit for human occupancy, weeds, junk, rubbish, dog barking, noise, properties that are falling in such disrepair they have become a danger to a neighbor. This ordinance is going to give the township a very effective method of responding to the most common complaints of it's residents. To read the ordinance in it's entirety visit our website at, [www.southamptontownship.org](http://www.southamptontownship.org)

### Fire Prevention Awareness:

- ◆ Please change the batteries in your smoke detectors and test them.
- ◆ As fall arrives, clean up around our home to help prevent fires & safety hazards.
- ◆ Christmas/Holiday lights can be a fire hazard. Please use caution.
- ◆ Holiday cooking can turn dangerous.

Southampton Township, Franklin County, is now on Facebook! "Like Us" to stay up to date on road closings, weather conditions, community events and more! Help us spread the word to your family and friends.

The more "likes" we have the better!



## White Church Road Open

The bridge culvert on White Church Road has been finished and the road is open. As many of you know who live on the "South Side" White Church has been closed most of the summer. Our goal was to have this repair in place before school started, but one rain gusher came through in early August at the wrong time and wiped out all the footer foundations and steel.

A new Conspan Concrete Bridge was set in place, new pavement and guiderail installed, and the road lines painted. The total costs of the project is going to be about \$225,000.

The speed limit is still only 35 MPH so enjoy a little bit of the country as you legally travel down White Church Road.



## Election News

General Election Day, which is the 2012 Presidential Election, will be held Tuesday, November 6, 2012. Polls are open from 6:00 a.m. to 8:00 p.m. Respective voting locations are:

- 705 Municipal Drive (Municipal Building)
- 3159 Orrstown Road (Tall Timbers)
- 8770 Possum Hollow Road (Living Faith Chapel)

\*Remember to bring your photo ID to vote.

For further assistance regarding any Election inquiries, please call the Franklin County Court House Voter Registration Office at 717-261-3886.

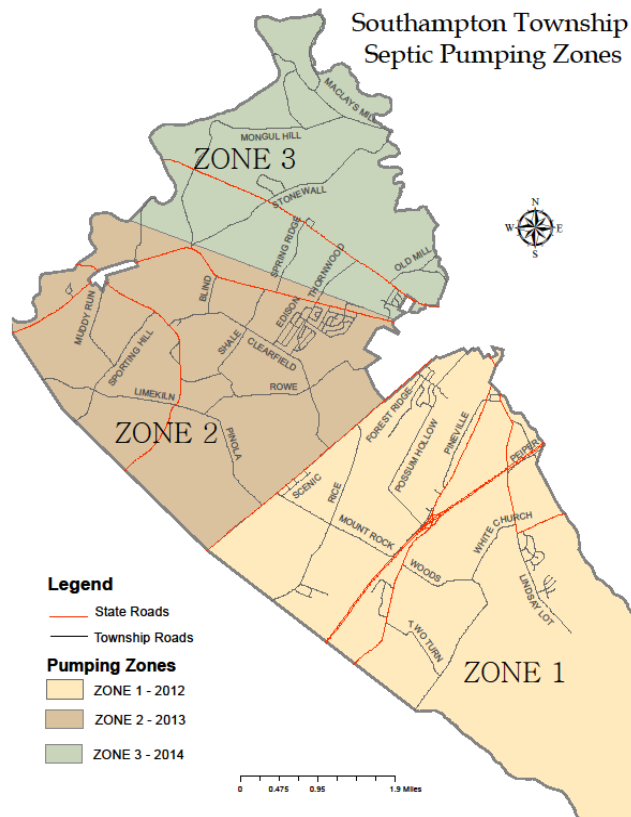
## Community Events:

### Kids Safety Day

Shippensburg Lowes

October 6, 2012 from 9:00 am to 3:00 pm

- ◆ Dewalt Car Cutting Event at 2 pm
- ◆ K-9 Demos at 11 am & 1 pm
- ◆ Helicopters on Site from 9 am to 2 pm
- ◆ Fire Truck Bounce House for Kids
- ◆ Modern & Antique Units Attending



## LEAF COLLECTION SCHEDULE

**\*\*Dates are approximate\*\***

Begins: October 15th

Ends: November 21st

Once leaf collection begins, it will run Monday through Thursday. Collection will begin on the following Monday where it left off the previous week. With more than 60 miles of roads, it may not be possible for your leaves to be collected every week.

- Leaves must be raked in a row, running parallel with the road
- Leaves must be raked away from mailboxes, poles, cars and other obstructions
- Twigs and branches must be kept out of leaf piles as they clog the machine
- Be careful not to rake up stones they are hard on the leaf machine

If your leaves are not being collected, it may be because of one of the above items are not being followed.

## SEPTIC SYSTEM PUMPING REMINDER

### ZONE 1

If you have an on-lot septic system and live in Zone 1 (see map), you are required to have your septic system pumped by December 31, 2012. If you have not already done so, you will be receiving a reminder notice in the mail. Please be sure to contact one of the township licensed pumper/haulers to have this done ASAP to avoid further action!

### LICENSED SEPTIC HAULERS PHONE NUMBERS

2012	
Name	Phone
Art Beidel Enterprises LLC	349-7028
Baker's Septic Tank Service	249-5056
Chamberlin & Wingert	530-9741
Daley Sons Septic Service	597-8181
Oaktree Environmental Services	249-5056
Premiere Septic Services	530-0582
Rosy's Wastewater Removal	369-4809
Superior (Rosenberrys) Septic Service	532-4026
Witter's Septic & Sanitation	369-0083
Young's Sanitary Septic Service	432-3514

## Bulky Trash Days set for October 12th and 13th

Southampton Township will hold its semi-annual bulky trash days on Friday, October 12th, from 12:00pm until 5:00pm, and on Saturday, October 13th, from 7:00am until 12:00pm. The drop off spot will be at the township building on Municipal Drive. Drive *behind* the township facility where someone will greet you and get your name and address and answer any questions you have about disposal of your junk. There are certain items that we cannot take and others that we have to charge a minimal fee.

Items that we cannot accept are: liquid wastes of any kind, including waste oil, paint, insecticides, inks and solvents, aerosols or pressurized containers. No motors containing gasoline or oil, tanks-welding or cooking; ammunition or anything explosive. No 55-gallon drums, hospital/biohazard waste, industrial wastes of any kind, or anything containing asbestos. No contaminated soil or yard waste, or dead animals. Of course, the township must reserve the right to refuse anything that it thinks is a hazard.

The township will take up to 4 automobile tires from each household 15" or smaller free of charge. We do not accept tires on rims. There will be a fee charged for any more than 4 tires or any tires larger than 15".

Refrigerators, air conditioners, dehumidifiers, or anything that has Freon in will also have a \$5.00 charge. The township can accept automobile batteries in small numbers.

We will have big roll-off containers on site. If you are able bodied, you will be directed to a self-unload zone to help keep things moving. If you need help we will direct you to an area where we will be happy to help you.

As a free service to assist elderly and handicapped, township resident, Lane Thrush of RE/MAX Realty Agency in Chambersburg is offering for volunteers to pick up the items for you on Thursday, October 11th. You will still be responsible for any fees that may be associated with the junk. If you need help and want to schedule a pickup, please call Lane's office at 709-7063 by Wednesday, October 10th.

## Recycling of Metal, Computer Components and Televisions

Southampton Township is committed to keeping as many recyclable items out of our landfills as possible during bulky trash days. Not only does it keep less materials from going into the landfill, but it reduces the cost to the township by lowering the landfill hauling and dumping fees.

### Metal

Gettel's Salvage will once again be at our bulky trash days. If you unload yourself, please be conscientious and deposit any metal either in the salvage trailer, or if it is heavy as in the case of grills and old lawnmowers, place them beside it, and we will load it for you. In 2011, over 28,000 pounds of metal were recycled during bulky trash days, saving the township approximately \$1,200 in landfill fees.

### Computers, Components and Peripherals

Computers and electronics are considered "E-Waste" and are being outlawed from being dumped in our landfills. All computers, components and peripherals including CRT monitors will be recycled free of charge thanks to the Computer Barn. If you self-unload anything computer related, please place it *gently* under the equipment sheds. Working computers and components may be reused by non-profits, charities and other organizations. You may label as "working" if you are so inclined. In 2011, almost 18,000 pounds of E-Waste was kept out of the landfills and saved the township almost \$700 in landfill fees.

### Televisions

Disposing of televisions is still evolving and changing. Breaking down televisions to be recycled safely is a time-consuming process. There will be a \$10 charge on all televisions. If you are self-unloading, please *gently* place your television under the equipment sheds with the computers. If you need help, pull your car down to the loaders and we will be happy to help you.

During the fall of 2011, Southampton Township collected 171,000 pounds of leaves and recycled all of them to township farmers and residents.

---

## **SOUTHAMPTON TOWNSHIP FRANKLIN COUNTY**

Southampton Township  
705 Municipal Drive  
Shippensburg, PA 17257

Phone: 717-532-9041

### **Your Supervisors**

**Paul Witter**

**Samuel Cressler**

**Steven Wolfe**

### **CONTACT THE TOWNSHIP**

Southampton Township Office hours are from 7:00 am until 4:00 pm Monday thru Friday. The office is closed on Holidays and the Friday after Thanksgiving. The facility is also used for primary and regular elections. Our office must be closed those days as well.

You may contact us by phone at **717-532-9041**. Our office is open to the public and you may stop in during regular business hours for questions or concerns.

All are welcome to attend Board of Supervisors (BOS) meetings and Planning Commission (PC) meetings the dates are as follows:

#### **Township Meeting Dates**

2nd Tuesday of the Month—8:00am—BOS meeting

3rd Tuesday of the Month—7:00pm—PC meeting

4th Tuesday of the Month—7:00pm—BOS meeting

### **When the Snow Falls...**

The normal township hours are 7:00am until 4:00pm Monday through Friday; however, during snowstorms all available personnel may be required to keep the roads passable and safe. If you need to contact the township, please leave a message and someone will get back to you as soon as possible.

To minimize the effects of the snowplow filling in your driveway, shovel/blow snow to the right of your driveway. By doing this, the bulk of the snow is past your driveway when the snowplow goes through.

We get several calls after every snowstorm from residents whose mailbox has been knocked over. Occasionally our drivers will get a mailbox, but more often than not, it is the force of the snow hitting it that knocks the mailbox over. If you feel a driver hit your mailbox, call the office at 532-9041. Our Roadmaster will examine the mailbox, measuring plow marks and tire tracks. If he determines that it was in fact the plow physically hitting the mailbox and destroying it, we will replace it for you. We cannot replace mailboxes that are damaged by the force of the snow or are less than a full two (2) feet off of the roadway.